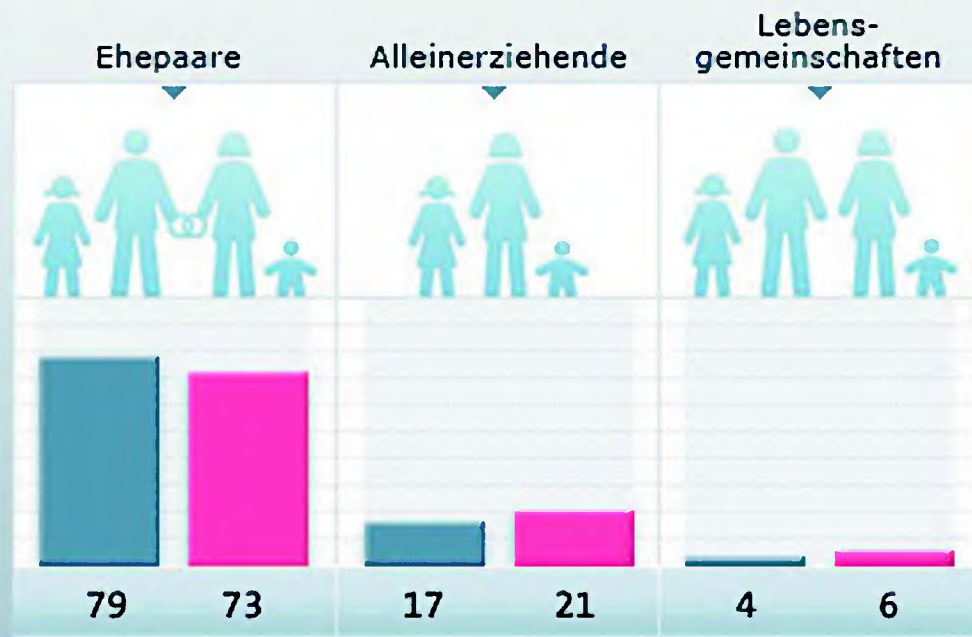


# Wohnprojekte für kleine und große Familien

Peter Ottmann, Architekt BDA

# Familienformen in Deutschland

(in % aller Familien)

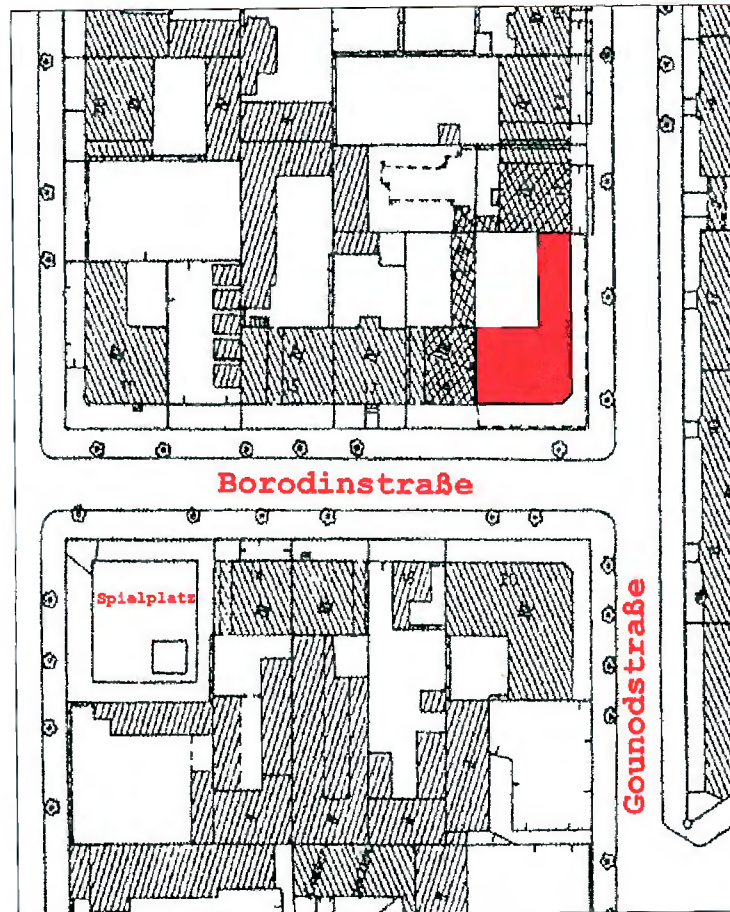


■ 1996 ■ 2006

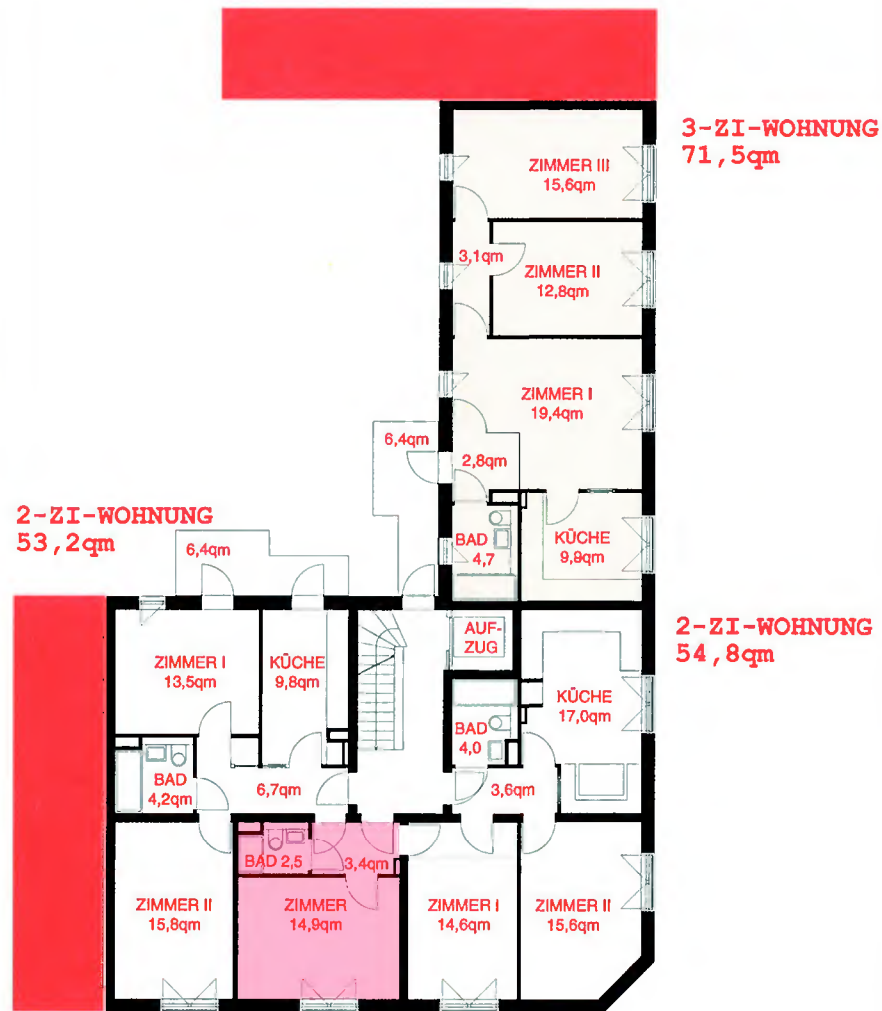


Gounodstraße, Berlin

# WOHNUNGEN FÜR ALLEINERZIEHENDE



BERLIN - WEISSENSEE













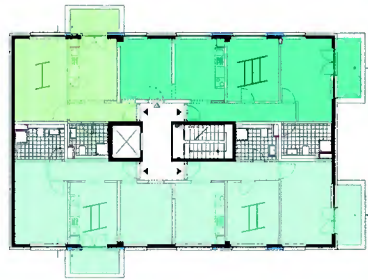


Felsenelkenanger, München

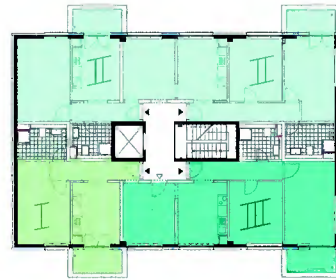




Erdgeschoss



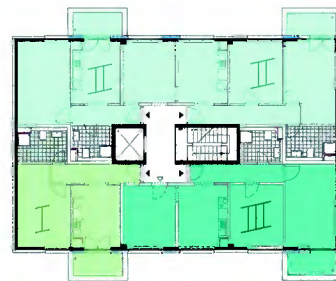
5. OG



6. OG



3. OG



4. OG



1. OG



2. OG

### Wohnungstypen

Typ I = 12 (incl. 3x I / N o. Z)

Typ II = 12

Typ III = 3

"IST" gssamt = 27

Z = Zuschalraum  
(Mehrzweck-, Notaufnahme o. Intensivraum)

S / K = Sanitär- / Küchenraum

I / N = Notaufnahme max. 1 Mutter + 1 Kind

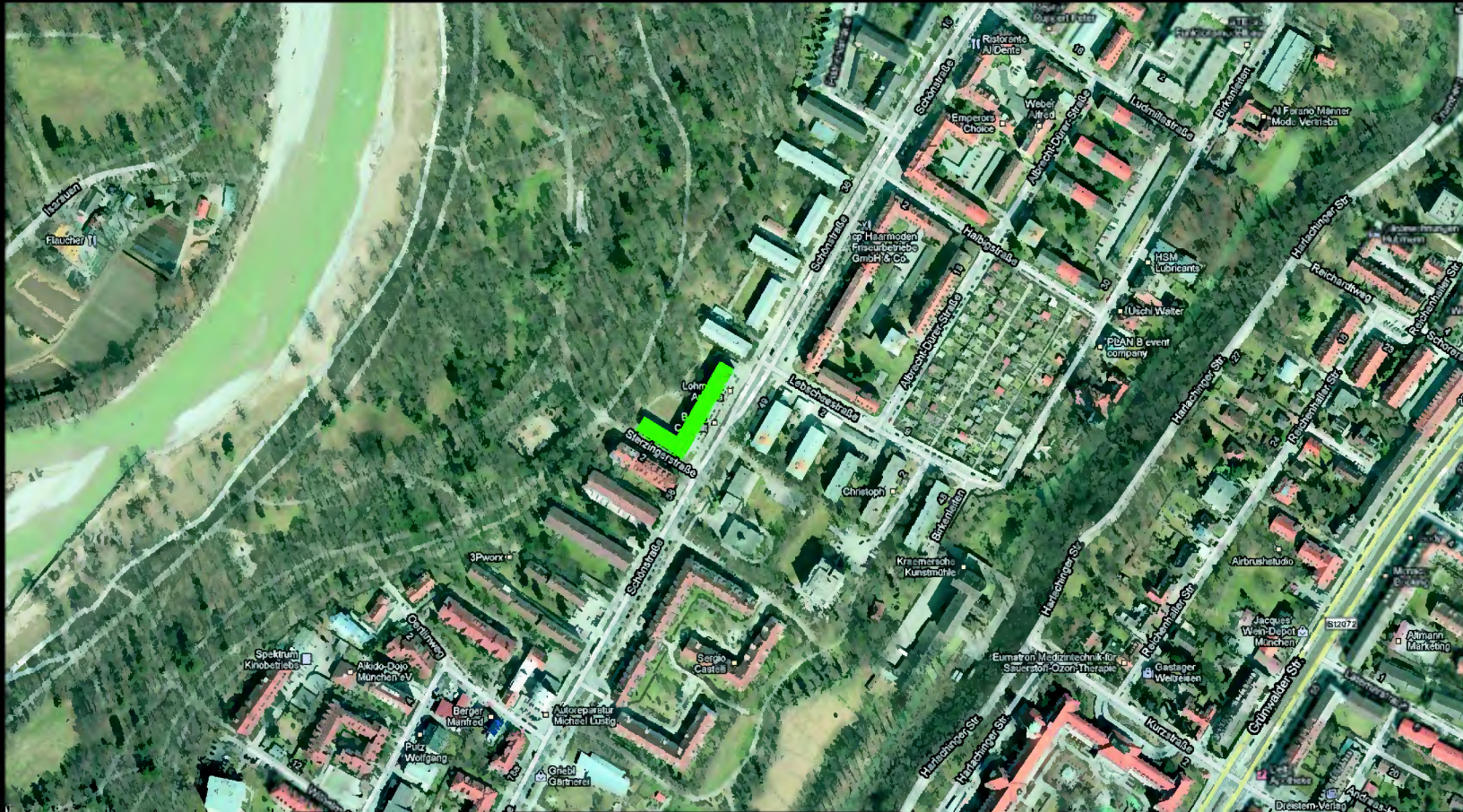
I = 1 Mutter + 1 o. 2 Kinder

II = 1 Mutter + 2 o. 3 Kinder

III = 1 Mutter + 3 o. 4 Kinder

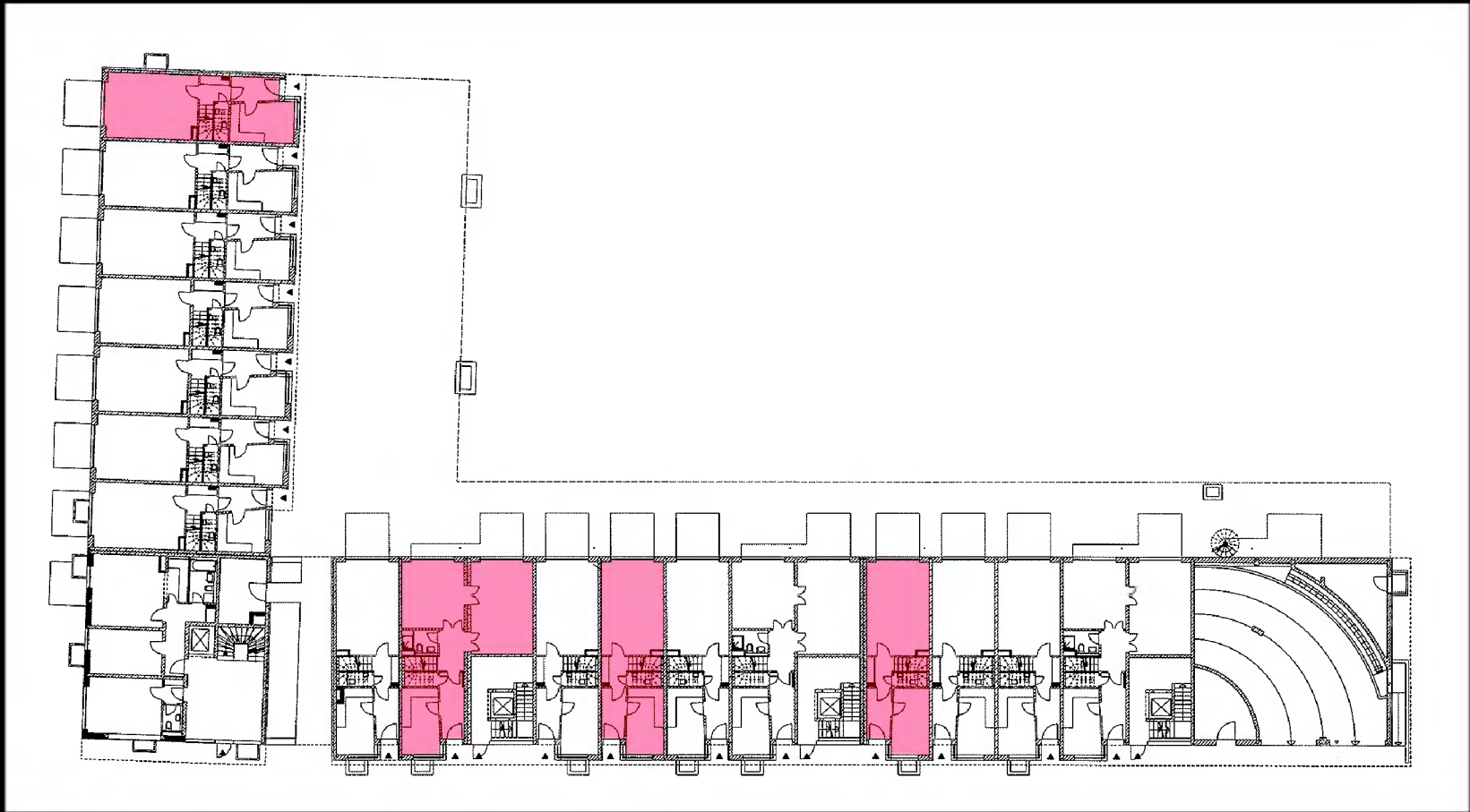




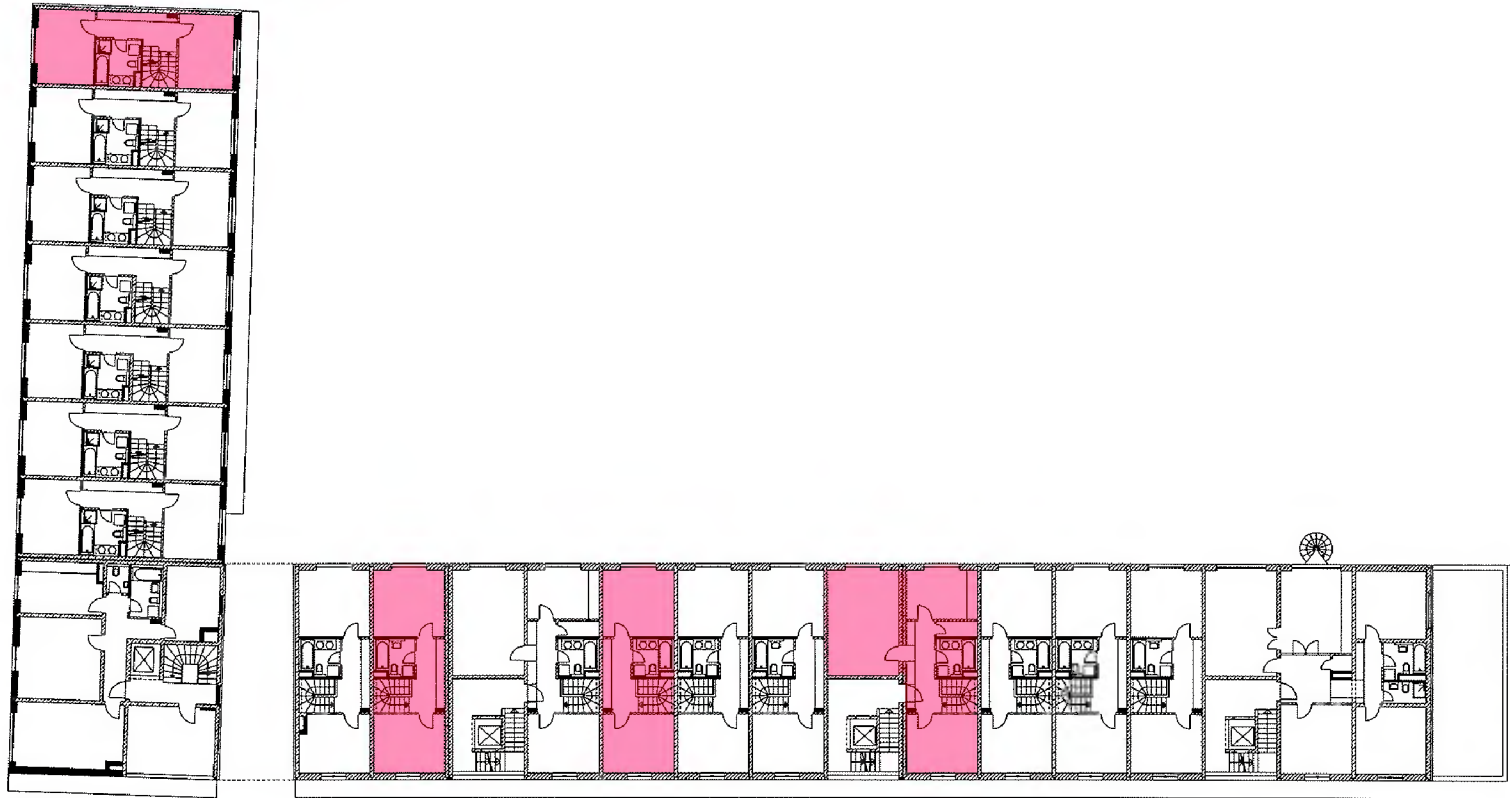


Schönstraße, München

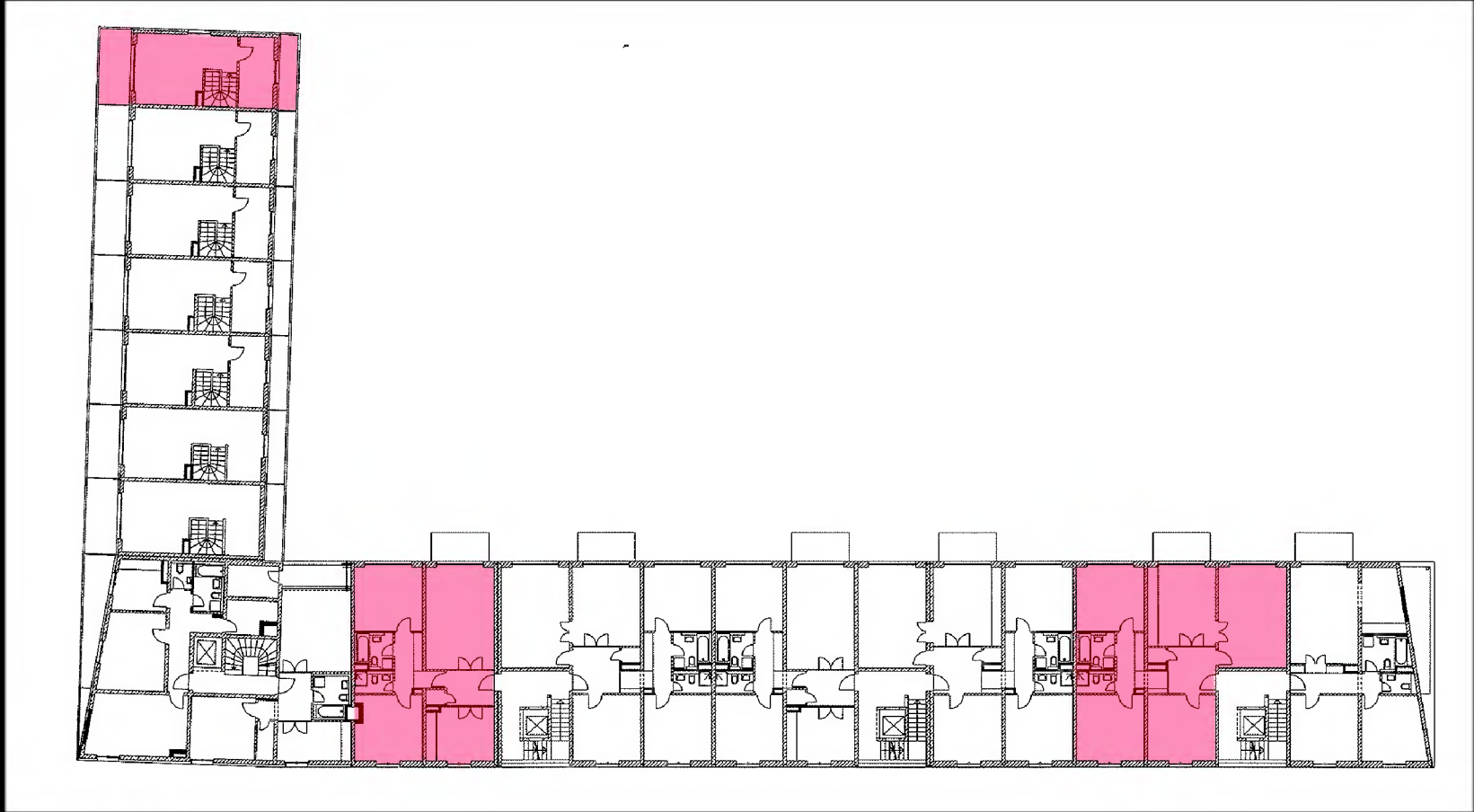




Erdgeschoss



1. Obergeschoss



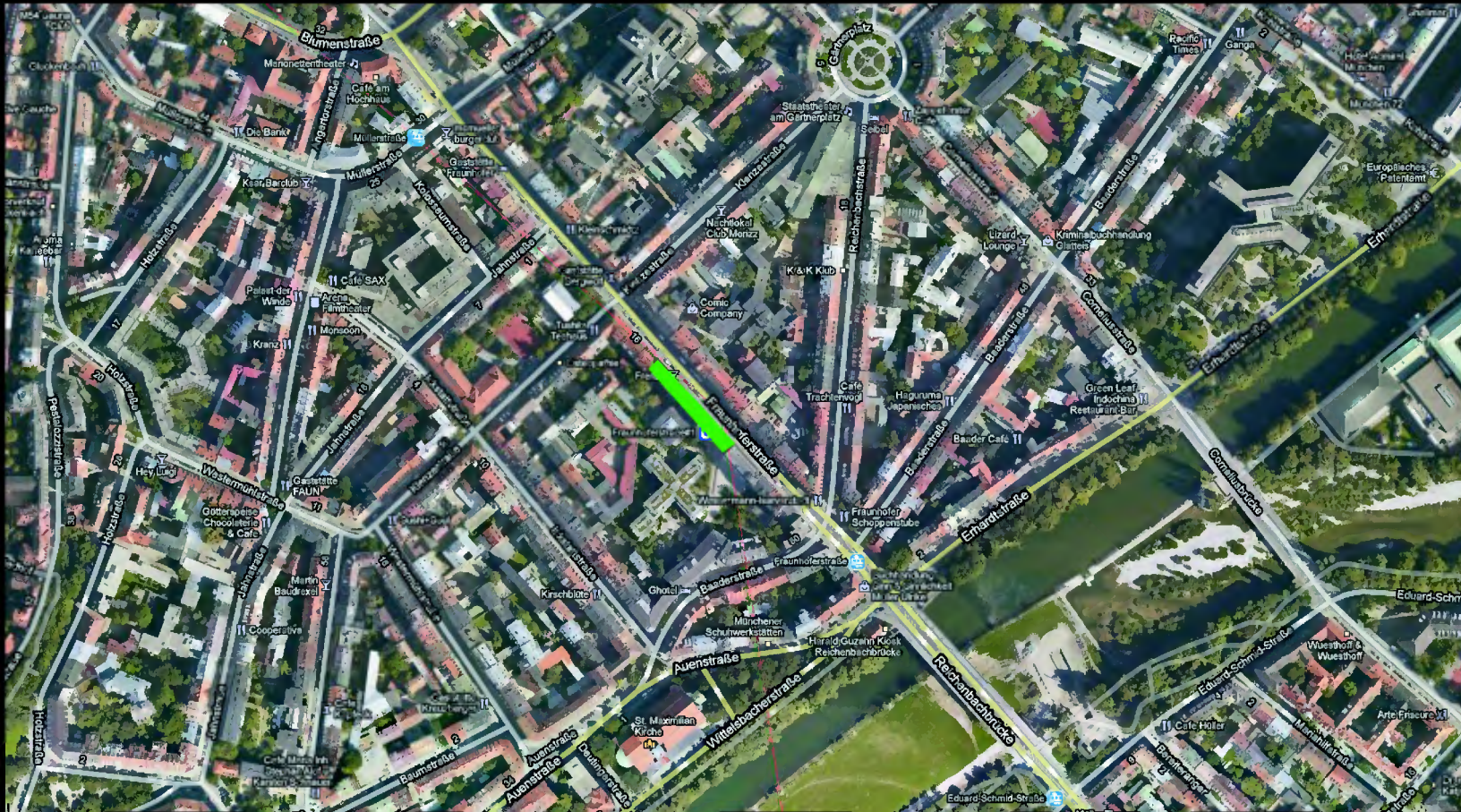
2. Obergeschoss











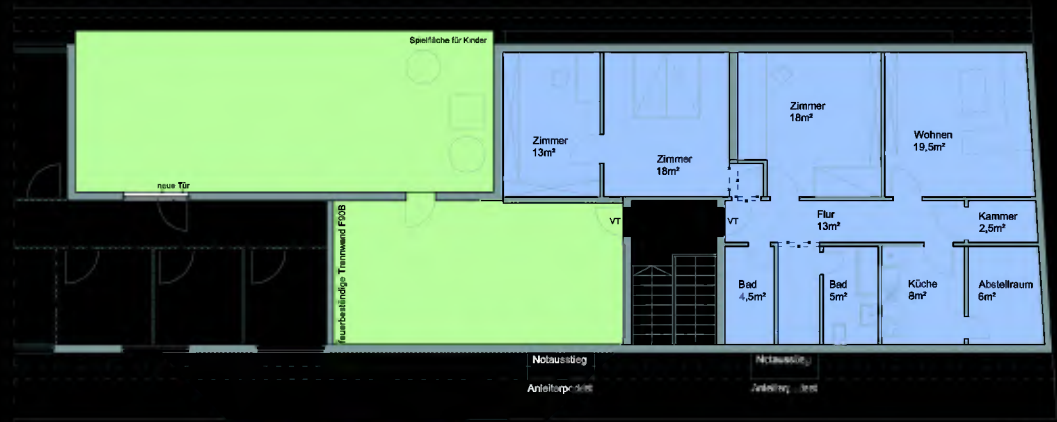
Fraunhoferstraße, München

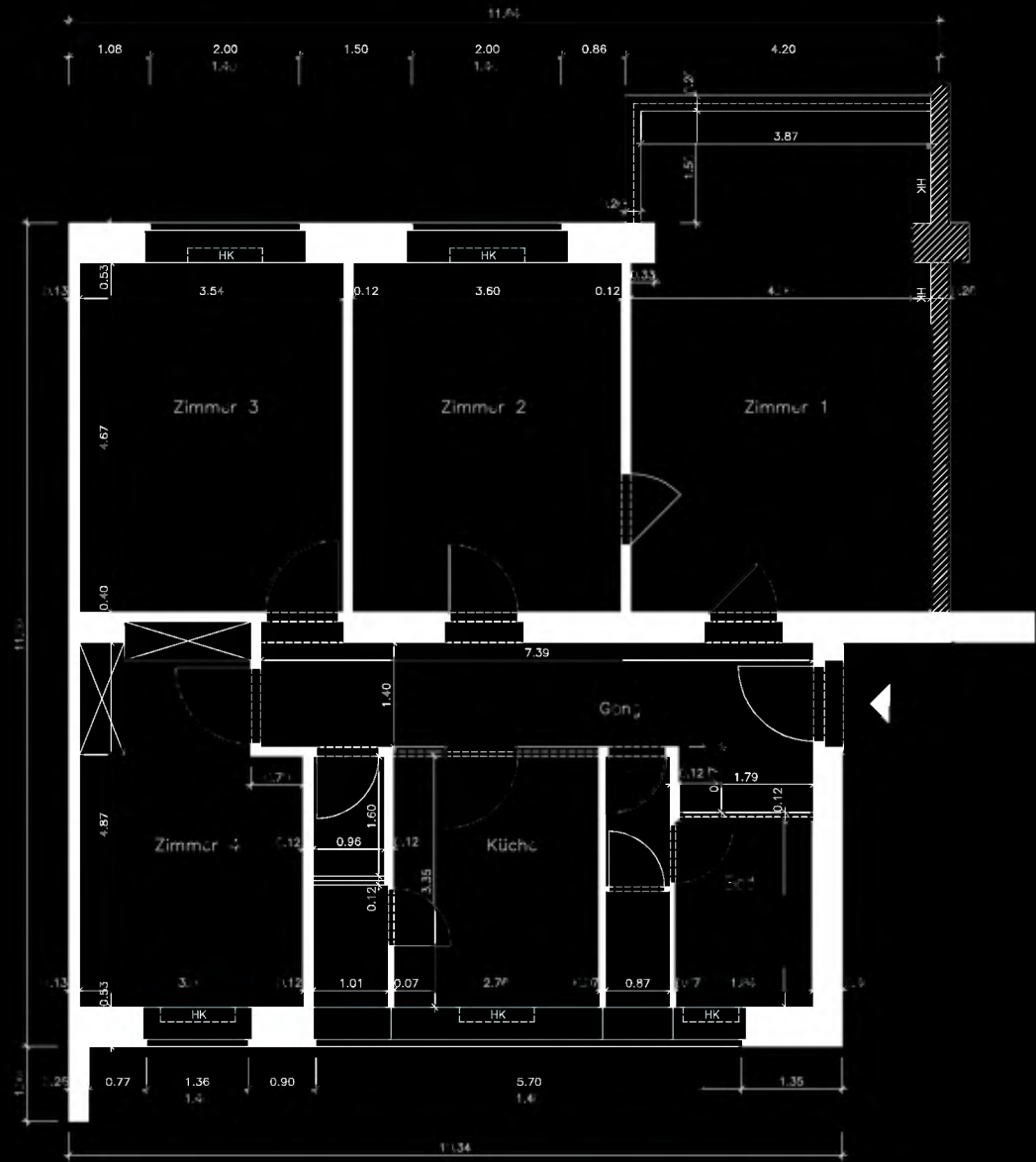
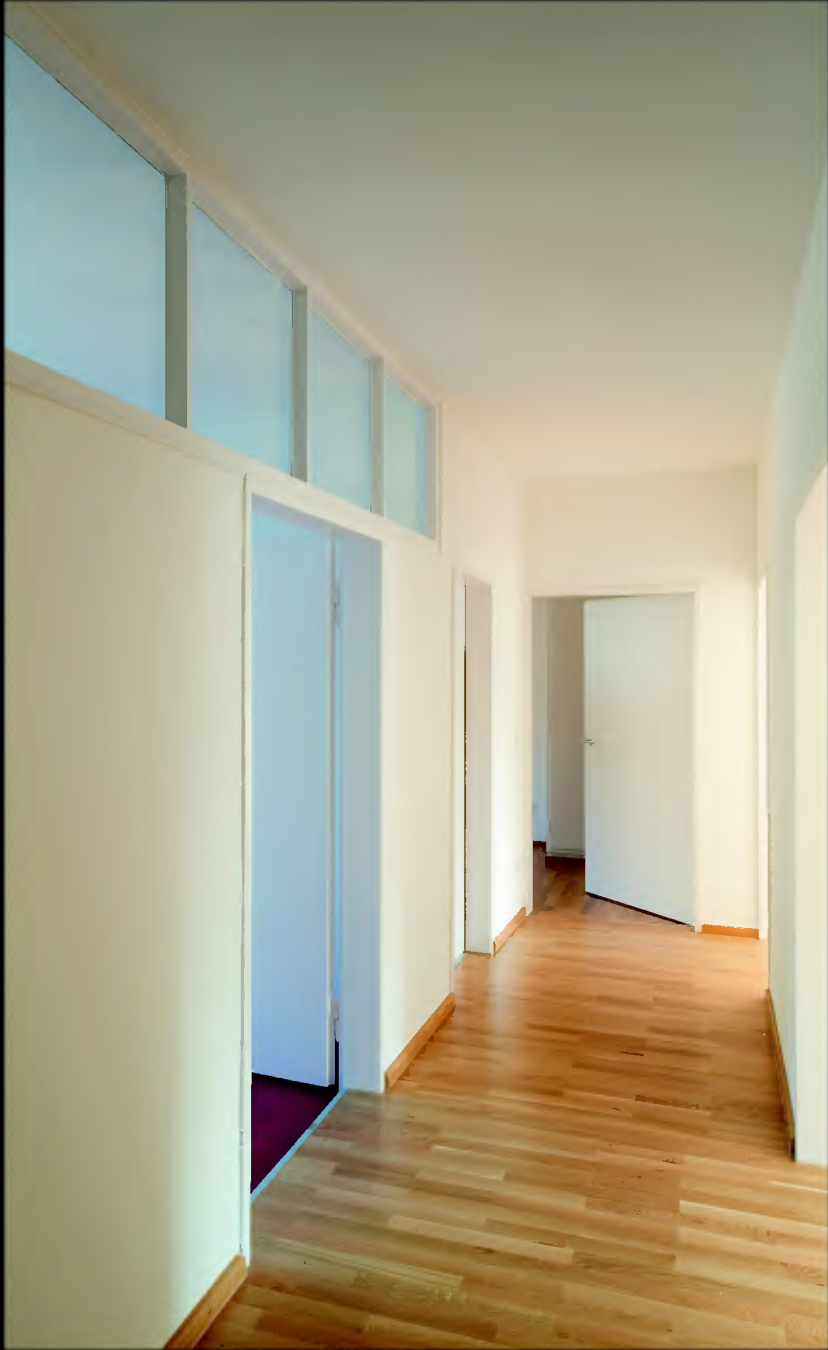














Vielen Dank für Ihre Aufmerksamkeit!